

Model No :: **20776LEDD-BS/OPL**  
 Name :: Solid



Project Name :: \_\_\_\_\_  
 Location :: \_\_\_\_\_  
 Type :: \_\_\_\_\_  
 Quantity :: \_\_\_\_\_  
 Notes :: \_\_\_\_\_

Product Information	
Product ID ::	20776
UPC Code ::	641594198249
Mounting Type ::	Ceiling
Finish ::	Brushed Steel (BS)
Diffuser ::	Opal (OPL)
Alt. Finishes ::	Bronze (BRZ); Brushed Steel (BS)
Alt. Diffusers ::	Opal (OPL)

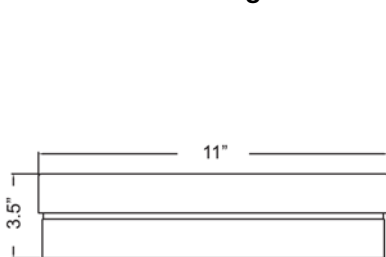
Product Dimensions			
<b>Fixture</b>		<b>Canopy</b>	
Length ::	N/A	Length ::	N/A
Width ::	N/A	Width ::	N/A
Diameter ::	11"	Diameter ::	N/A
Extension ::	N/A	Height ::	N/A
Height ::	3.5"		
Overall Height ::	N/A		



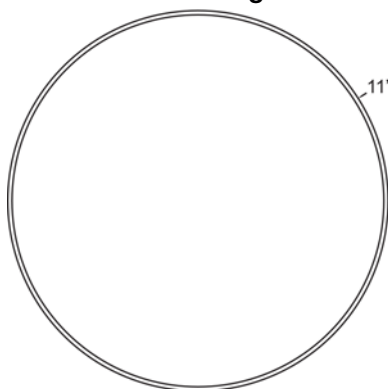
### Technical Specifications

Qualifications	Specifications	Photometrics	Recommended Dimmers
Location Rating :: Damp	Frame Material :: Metal	CCT :: 3000	(ELV) LEGRAND Paddle ADPD453LM2; (ELV) LUTRON Diva DVELV-300P; (ELV) LUTRON Diva DVELV-303P; (ELV) LUTRON Skylark SELV-300P; (TRIAC) LUTRON Diva DV-600P
Certification :: UL Listed (US/Canada)	Diffuser Material:: Glass	CRI :: 90	
IES File ::	Voltage :: 120v	Wattage :: 30w	
JA8 Compliant :: No	Lamping Type :: Dedicated LED	Nominal Lumens :: 2600Lm	
Energy Star :: Yes	Lamping Base :: SSL	Delivered Lumens :: 1354Lm	
ADA Compliant :: No	Lamp Quantity :: 1		
Marine Grade :: No	Lamp Wattage :: 30 W		
Emergency Lighting :: No	Total Wattage :: 30w		
Warranty :: 5 Year Limited	Lamps Included :: Yes		
	J-Box Type :: Standard		
		Additional Items :: Available in Warm Dimming, Alt CCT Available, Available in 0-10V Dimming, Available in 277V	

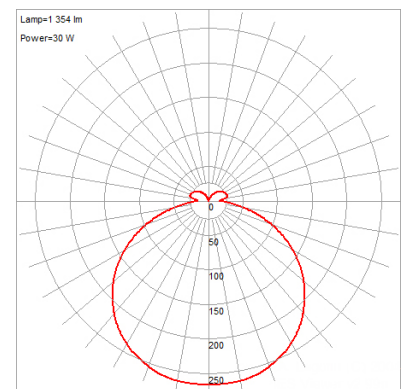
Line Drawing #1



Line Drawing #2



IES File



Toll Free 800-828-5483 • [www.AccessLighting.com](http://www.AccessLighting.com)

14410 Myford Road, Irvine, CA 92606

The information provided is subject to change without notice. ©2020 Access Lighting Corporation. All Rights Reserved  
 Rev. 202004 Filename:: 20776LEDD-BS\_OPL.pdf

