



LOCATION		DATE
PREPARED BY		QUANTITY
COMMENTS		FIXTURE TYPE
CATALOG NUMBER		

Cirrus LED Flush Mount C2F Series

Features

This Cirrus LED flush mount is a round floating cloud style providing light to any room. An excellent alternative solution to incandescent or CFL fixture with long lasting and energy saving LED technology. Ideal use for general lighting in indoor residential, commercial, and hospitality applications. Fixture can be mounted to a standard junction box (not included) on a ceiling. Available in multiple sizes.



Construction

A 22-gauge steel housing made by stamping process and painted in lighting grade white to provide long lasting finish with 3 side white screws to hold molded diffuser. Power supply connections must be made inside a junction box (not included).

3in1 color temperature
3000K/3500K/4000K

Finish

White.

Diffuser

0.070" thick smooth white acrylic.

Electrical

Input 120VAC / 60 Hz.

Compatible with Triac or ELV dimmers.

LED

Integrated LED modules capable of producing:

11" - 17W, 1600 source lumens

14" - 27W, 2400 source lumens

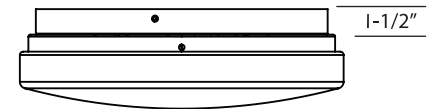
19" - 35W, 3100 source lumens

Adjustable Choice 3000K, 3500K, 4000K (CCT).

Rated for 50,000 Hrs. 90 CRI.



FLUSH MOUNT



BATTERY BACKUP

Certification

All fixtures are cETLus listed for indoor damp locations.

ENERGY STAR® qualified

T24-JA8 Compliant

Options (Consult Factory)

Battery back-up (available in 14" and 19" only)

Warranty

Limited warranty: This fixture is free from defects in materials and workmanship for a period of 5 years from date of purchase.

Specifications and dimensions

subject to change without notice.

Ordering Information:

White	LED	Source Lumens	Adjustable CCT	DIA.	D
C2F111600LAJD1	17W	1600	3000K/3500K/4000K	11"	3"
C2F142400LAJD1	27W	2400	3000K/3500K/4000K	14"	3"
C2F193100LAJD1	35W	3100	3000K/3500K/4000K	19"	3"