



LOCATION		DATE
PREPARED BY		QUANTITY
COMMENTS		FIXTURE TYPE
CATALOG NUMBER		

Soho Pendant SSP Series

Features

Frosted glass cylinder pendant is suspended with an 9 ft. adjustable cord can be ordered individual or with a multi-point canopy. Fixture mounts to a standard junction box (not included).

Construction

The glass cylinder is 14" tall and 3-7/8" in diameter and held into place by three decorative studs. The canopy fits over a standard junction box. Power supply connections must be made inside a junction box (not included).

Finish

The canopy is plated in satin nickel.

Diffuser

Glass cylinder pendant is .40" thick. Glass colors include white (WH), and cream (CR).

Electrical

Input 120 VAC / 60 Hz.

Lamping

1/60 watt (MAX) medium base bulb (not included).

Certification

All fixtures are ETL listed for indoor damp locations.

Warranty

Limited warranty: This fixture is free from defects in materials and workmanship for a period of 5 years from date of purchase.

**Specifications and dimensions
subject to change without notice.**

Ordering Information:

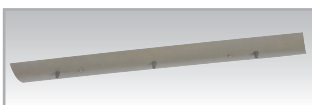
	White	Cream	Qty.	Lamp	Pendant DIA. H
Monopoint	SSP04MBSNWH	SSP04MBSNCR	1	60W (MAX)*	3-7/8" 14"
3-Light Linear	SSP04MBSNWHLNR3	SSP04MBSNCRLNR3	3	60W (MAX)*	3-7/8" 14"
3-Light Round	SSP04MBSNWHRND3	SSP04MBSNCRRND3	3	60W (MAX)*	3-7/8" 14"
6-Light Round	SSP04MBSNWHRND6	SSP04MBSNCRRND6	6	60W (MAX)*	3-7/8" 14"

*Sockets can be labeled for reduced wattage upon request.

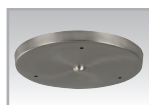


White

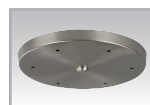
Cream



3-Light Linear Canopy
41" L x 5" W x 1-1/2" D



3-Light Round Canopy
15-1/8" DIA. x 1-3/8" H



6-Light Round Canopy
15-1/8" DIA. x 1-3/8" H