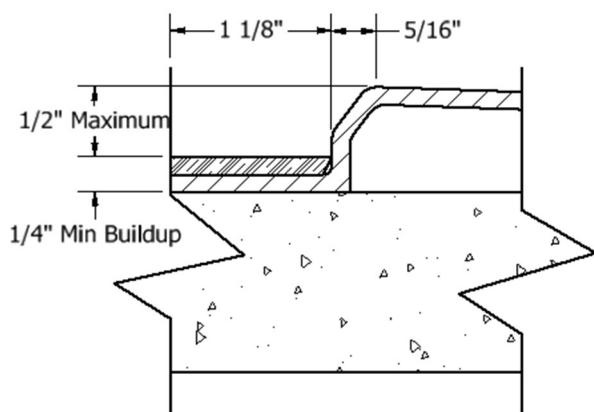




# Installation Instructions for Diamond ADA Low Threshold Shower Models: SHLT623676/SHTLT383876/SHTLT623676

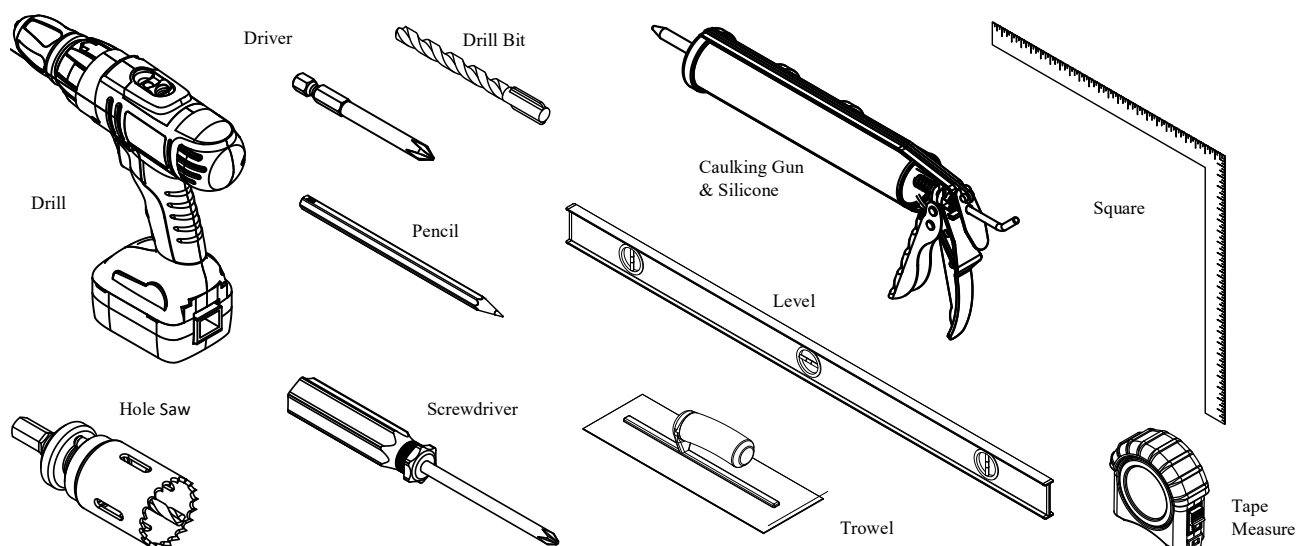
It is recommended that the bathroom floor outside ADA clear floor space be designed with a floor drain to alleviate any water or over spray that may escape the shower stall.

Build up and/or recess as shown below for compliance with 2010 ADA Standards for Accessible Design per 608.7.



Note: Valve and glide bar placement may vary in location and placement. See applicable codes.

## Suggested Tools



## Storage and Handling

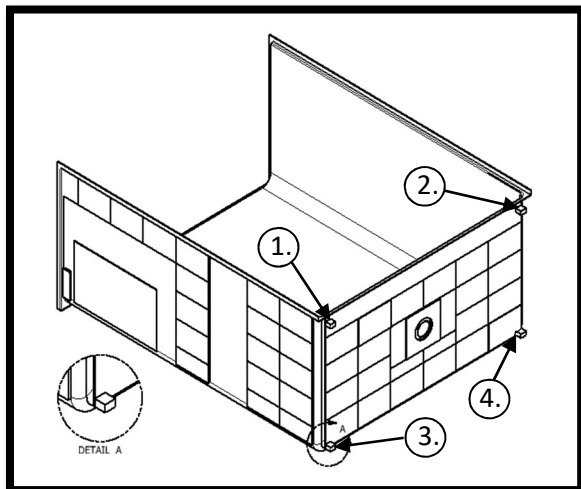
Storing units outside can cause discoloring due to sunlight and can be knocked over easily by wind. Backsides of shower units are not water proof. Water can permeate the back laminates and soak the glassed in wood and cardboard supports causing bulges in the finished surface.

Shower units should not be dragged over any surface and should be carried by two people or by a two-wheel dolly. Do not clean shower finished surface with metal tools such as razors.

**ADA Low threshold showers with a threshold of less than two inches of height are designed with four temporary wooden legs at the locations shown in figure 1a.** These legs are designed to keep the shower drain hole from setting directly on the floor while curing which may create reverse draft, which could cause the shower base to drain poorly.

**It is important not to remove wooden legs until ready to place the shower in its final installed position.** The legs are designed to be easily removed by lightly hitting with hammer or cutting by saw. After removing legs be sure to set shower on similar blocking if necessary.

**Fig. 1a**



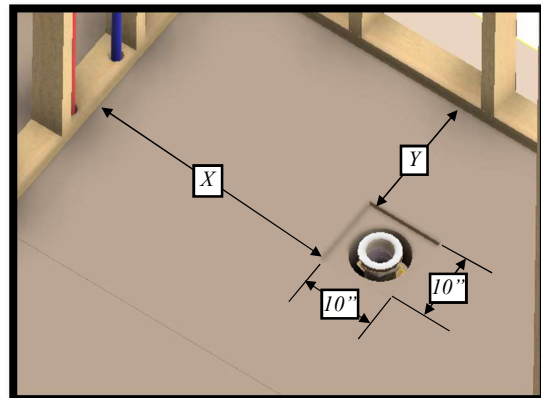
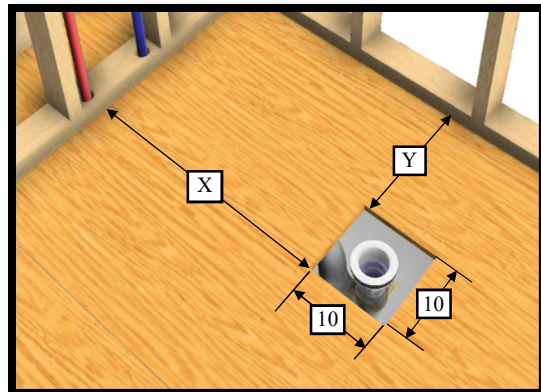
**Step 1:**

Verify that opening is Square, Level, and Plumb.

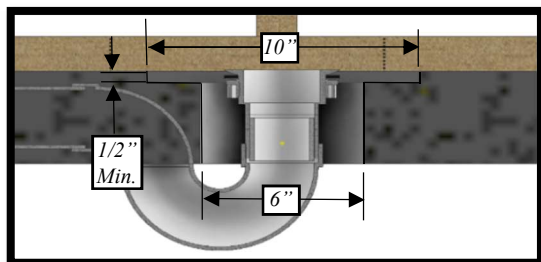


**Step 2:**

Check drain location and 10" box out.

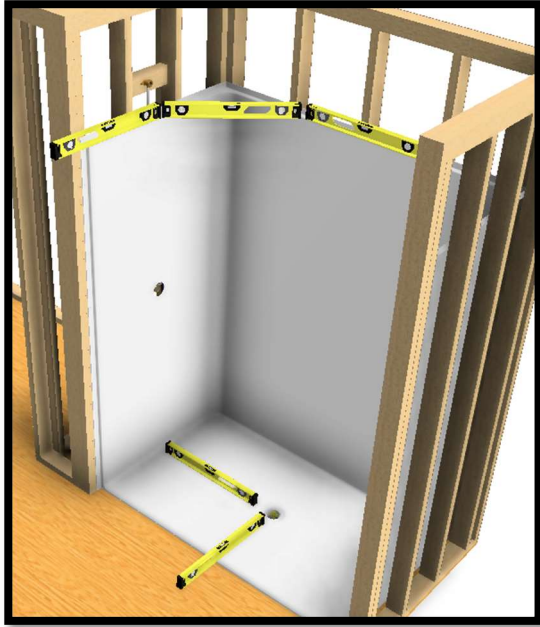


Box out and core for concrete construction



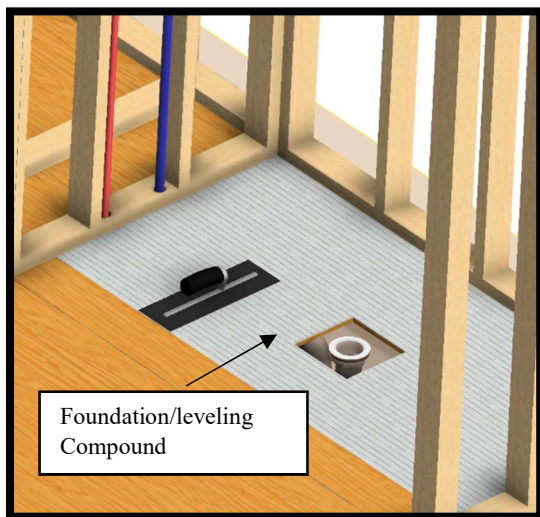
**Step 3:**

Slide unit back into place. Level top, sides, and threshold. Verify 1-degree slope to drain in all directions. If floor is not level under unit, leveling compound needs to be applied to fill void.



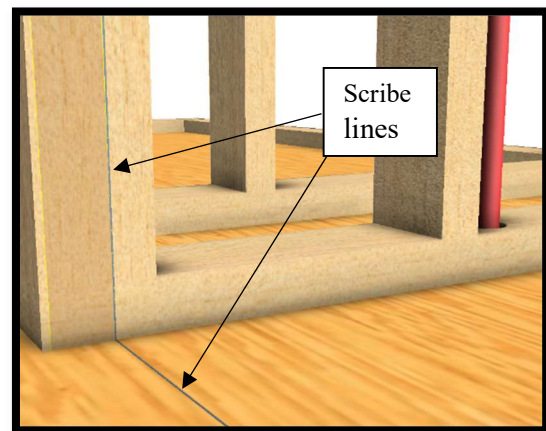
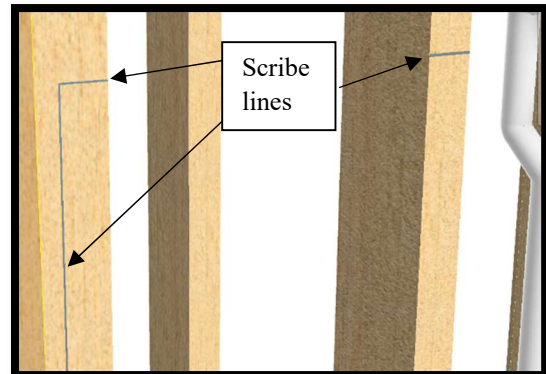
**Step 4:**

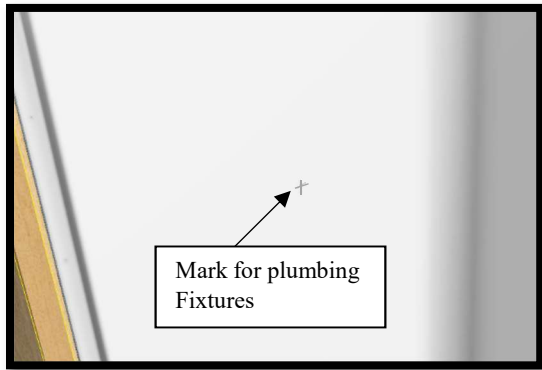
If floor is not level under unit, leveling compound needs to be applied to fill void.



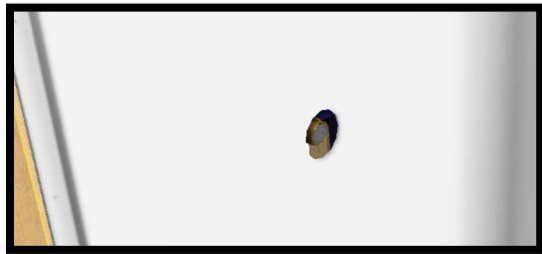
**Step 5:**

With the unit leveled, scribe a line all of the way around the perimeter of the flange. Mark location of plumbing fixtures.

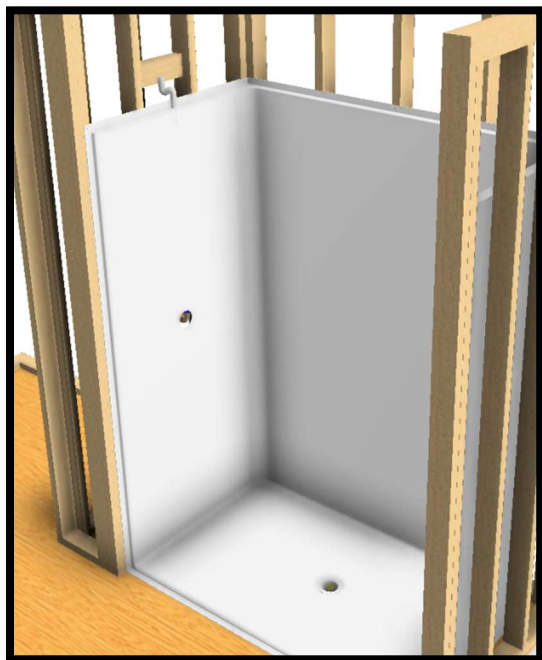




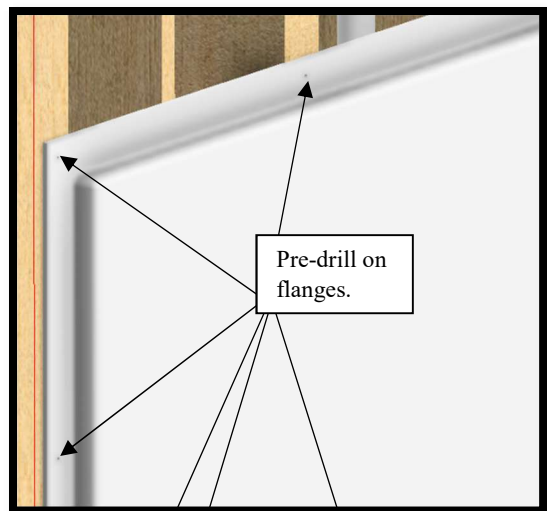
Step 6:  
Remove the unit. Drill fixture holes and install drain as per manufacturer's instructions.



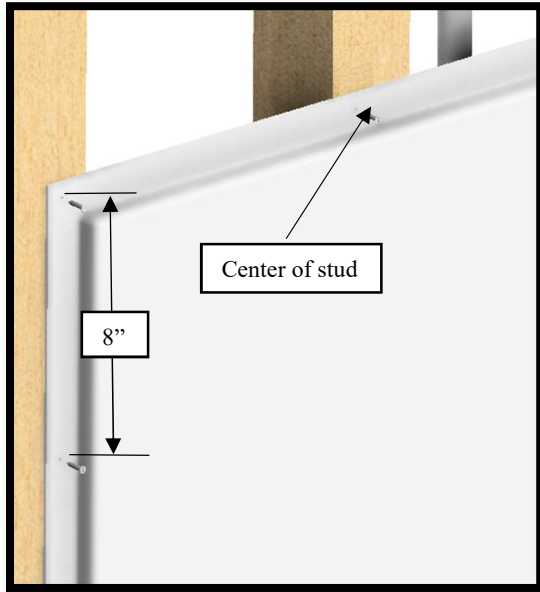
Step 7:  
Slide unit back into alcove and line up edge of flanges with scribe lines.



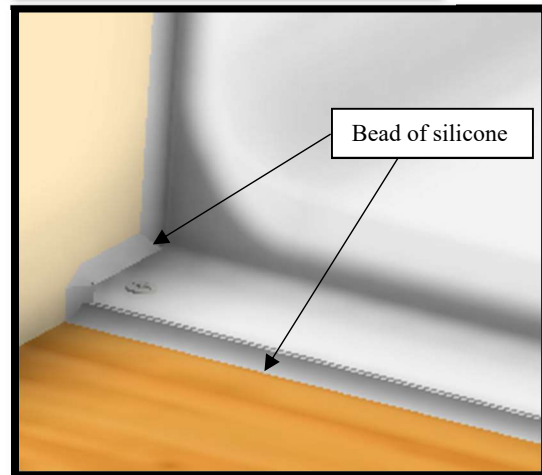
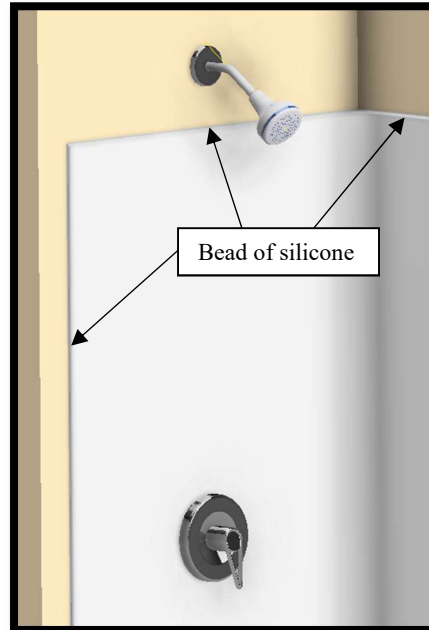
Step 8:  
With flanges aligned pre-drill holes horizontally at each stud and vertically approximately 8" on center in flanges. at approximately 8" on center.



Step 9:  
Install vertical screws approximately 8" on center. Center horizontal screws on studs.



Step 10:  
Install shower valve, showerhead, and drywall.  
Use silicone along all flange edges.



Step 12:  
Install flooring.

