



## Diamond Tub & Showers Spec Sheet

Model: STRB/STLB 604375

Description: One Piece "Offset" Tiled Shower Unit with Bench Seat  
(Right Shown)

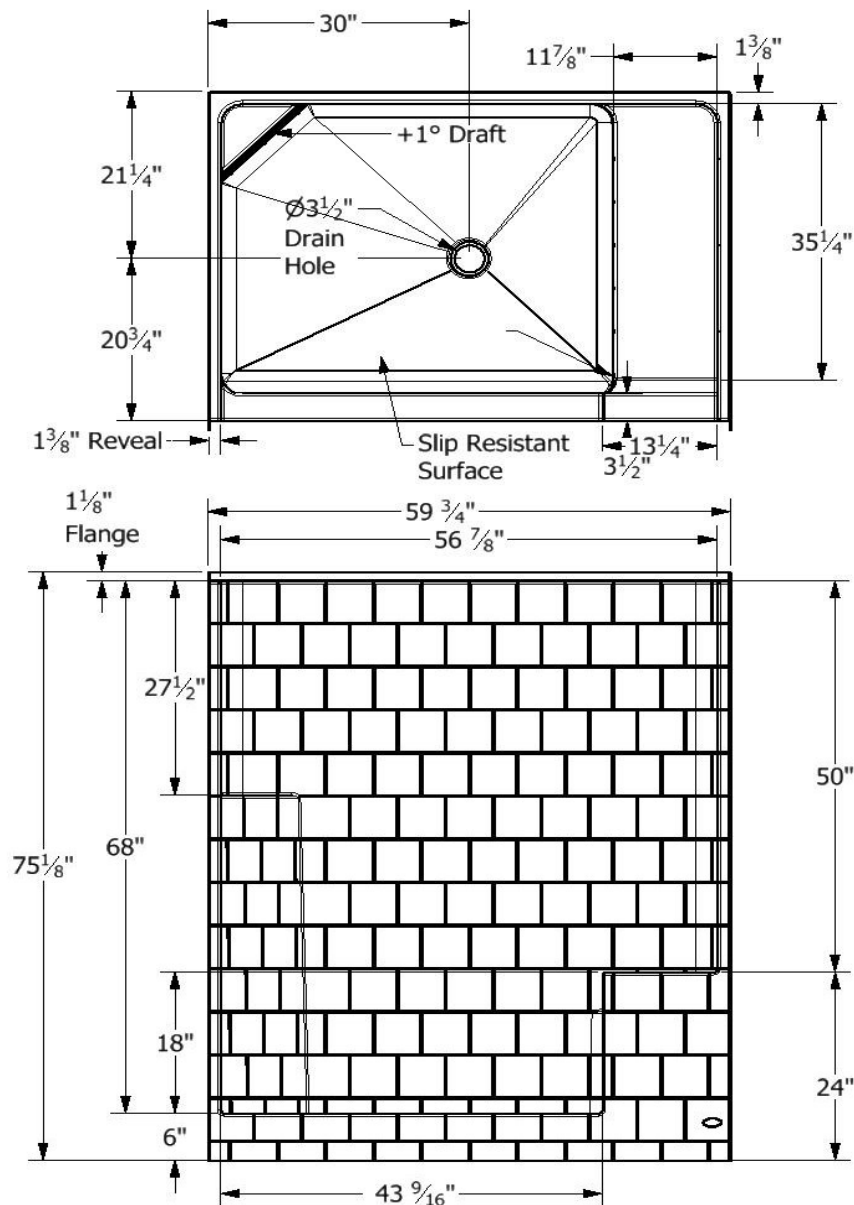
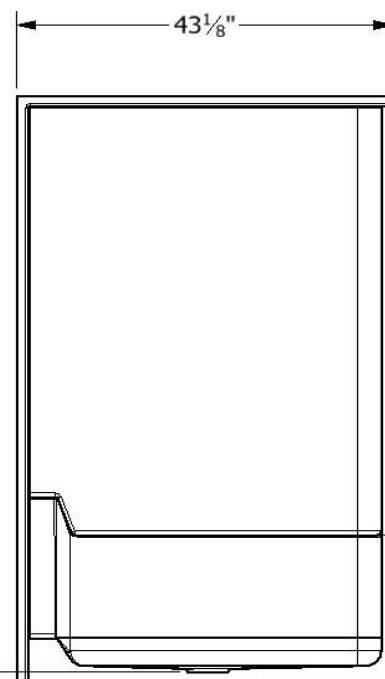
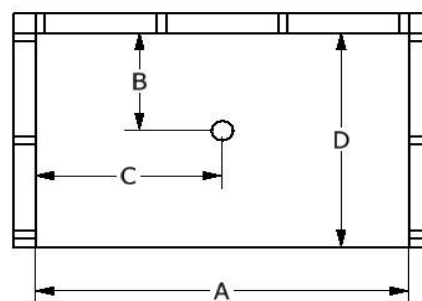
### Specifications

| Model #           | Material           | Wall Finish     | Pieces  | Drain  | Threshold Height | Net Weight Lbs. |
|-------------------|--------------------|-----------------|---|--------|------------------|-----------------|
| STRB/STLB 604375  | Fiberglass/Gelcoat | Offset Tile     | 1   | Center | 6"               |                 |
| Enclosure Opening |                    |                 |   |        |                  |                 |
| Width             | Height             | Buttress Height | Note: All Doors Should Be Field Measured to Ensure Proper Fit |        |                  |                 |
| 43 9/16"          | 68"                | 18"             |   |        |                  |                 |

### Framing Dimensions

| A   | B       | C   | D   |
|-----|---------|-----|-----|
| 60" | 21 1/4" | 30" | 43" |

### Framing Specifications



Certified to conform to ANSI Z124.1 and ASTM E- 162 Flame Spread Rating 200 or less and is under a program of factory inspection.

Manufactured by Frontline Mfg., Inc. Warsaw, IN  
 10/12/19



## Diamond Tub & Showers Spec Sheet

Model: STRB/STLB 604378

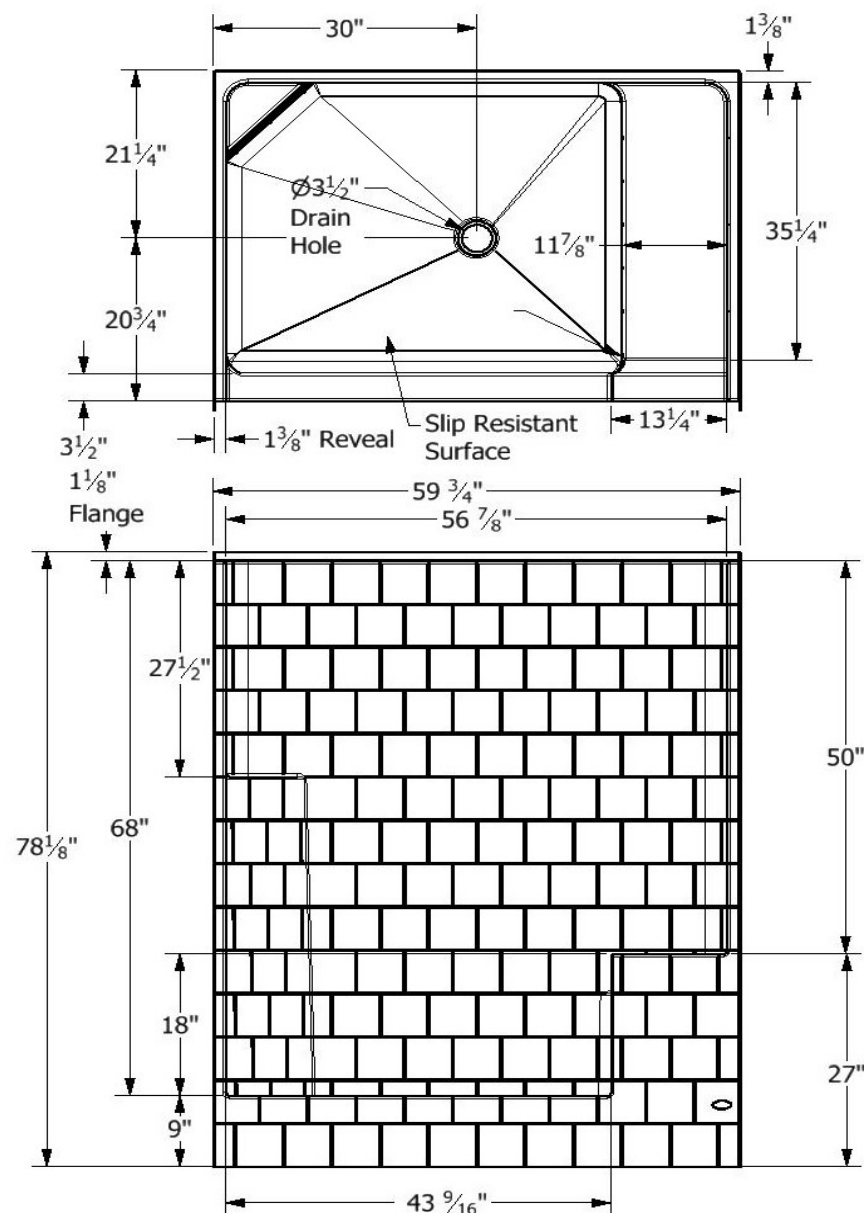
Description: One Piece "Offset" Tiled Shower Unit with Bench Seat  
(Right Shown)

### Specifications

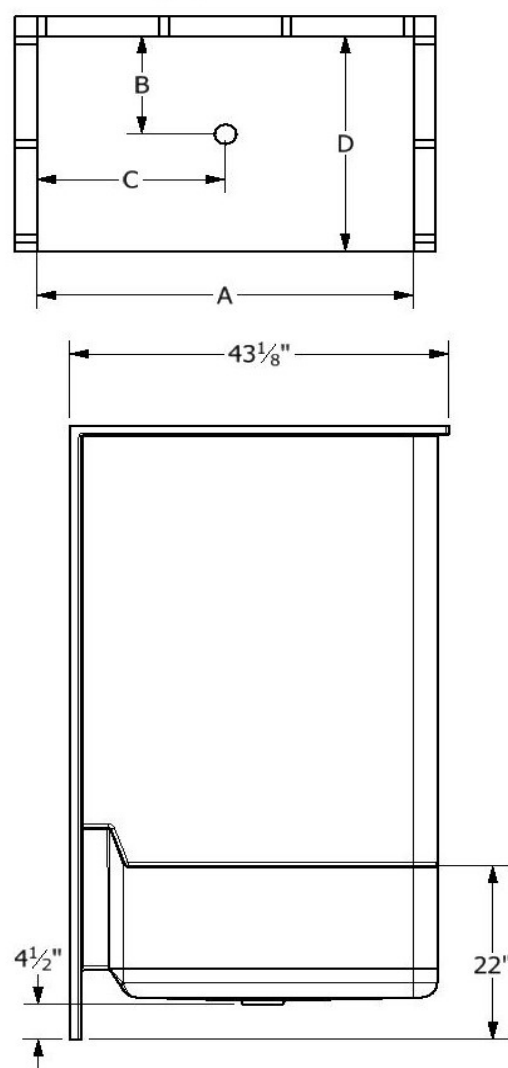
| Model #           | Material           | Wall Finish     | Pieces  | Drain  | Threshold Height | Net Weight Lbs. |
|-------------------|--------------------|-----------------|---|--------|------------------|-----------------|
| STRB/STLB 604378  | Fiberglass/Gelcoat | Offset Tile     | 1   | Center | 9"               |                 |
| Enclosure Opening |                    |                 |   |        |                  |                 |
| Width             | Height             | Buttress Height | Note: All Doors Should Be Field Measured to Ensure Proper Fit |        |                  |                 |
| 43 9/16"          | 68"                | 18"             |   |        |                  |                 |

### Framing Dimensions

| A   | B       | C   | D   |
|-----|---------|-----|-----|
| 60" | 21 1/4" | 30" | 43" |



### Framing Specifications



Certified to conform to ANSI Z124.1 and ASTM E-162 Flame Spread Rating 200 or less and is under a program of factory inspection.

Manufactured by Frontline Mfg., Inc. Warsaw, IN



10/23/19