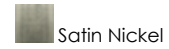


**PRODUCT DESCRIPTION**

Nathaniel Parker Willis once wrote "There they stand, the innumerable stars, shining in order like a living hymn, written in light". The Starburst collection evokes a story with the amazing multi-light pendants available in clear, blue, green, amber or violet. Each burst of color is suspended within its own glass globe, adding to the unique tale of the design. Chrome hardware and a satin nickel finish canopy completes each structure, adding an essential touch to enhance any designers' space.

**FINISHES OPTION**



**GLASS**

Clear 24

**MATERIAL**

Glass

**RATINGS**

cETLus  
Dry Location



**ADDITIONAL**

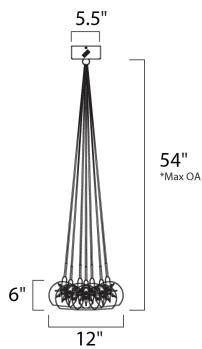
TRANSFORMER  
RATED LIFE 2000 Hours  
OPERATING TEMPERATURE:  
-20°C (-4°F), 40°C (104°F)

**MEASUREMENTS**

DIMENSION : 12" W  
MAX OAH : 54" OAH  
CANOPY : 5.51" W x 3.15" H x 5.51" L  
HANGING WEIGHT : 3.16 lb

**LAMPING**

INPUT VOLTAGE : V  
LUMENS : 2,240 Rated  
BULB : 7 x 20W Xenon 12V G4 , 140W Total  
BULB INCLUDED : (Included)  
DIMMABLE : Electronic Low Voltage (ELV)  
COLOR\_TEMP : 2900K



\*max overall height of fixture

Always consult a qualified electrician before installing any lighting product.



**WESTERN DISTRIBUTION CENTER (HEADQUARTER)**  
253 NORTH VINELAND AVE | CITY OF INDUSTRY, CA 91746  
**EASTERN DISTRIBUTION CENTER**  
4200 SHIRLEY DR. | ATLANTA, GA 30336  
P. 626.956.4200 | F. 626.956.4225 | et2online.com