

Installation Instructions

URGENT: READ PRIOR TO ATTEMPTING INSTALLATION

NTE-870 SERIES MAC 10W AC LED TRACK FIXTURE

**INSTALLATION SHOULD BE CARRIED
OUT BY YOUR LOCAL ELECTRICIAN.**

ALWAYS TURN OFF MAIN POWER BEFORE INSTALLATION

Item #	Description	Color Temp.
NTE-870L27XB NTE-870L27XS NTE-870L27XW	MAC 10W AC LED TRACK HEAD	2700K
NTE-870L30XB NTE-870L30XS NTE-870L30XW	MAC 10W AC LED TRACK HEAD	3000K
NTE-870L40XB NTE-870L40XS NTE-870L40XW	MAC 10W AC LED TRACK HEAD	4000K

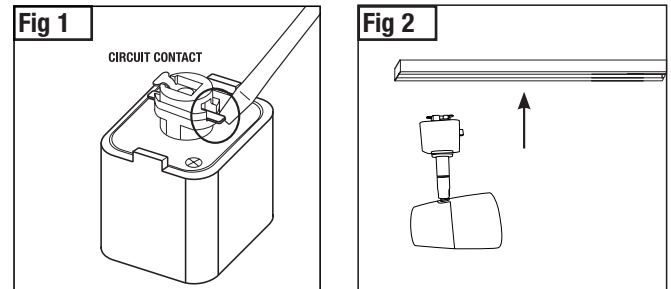
WARNING: Fire/Electrical Hazard

This equipment is intended to be installed only by qualified personnel. The installation must be made in accordance with the current edition to the National Electric Code and all applicable state and local building codes. The final installation must be approved by the appropriate qualified electrical/building inspector(s). Improper installation may result in a fire or electrical hazard. Be sure the electrical power to the circuit has been disconnected before installing this electrical system.

Installation Instructions

Note: LED Track Head comes ready to install right out of the box.

1. Turn off power to track before beginning installation.
2. Insert the fixture contacts into the track channel. (Fig 2)
3. Turn the fixture clockwise until the contact head can be inserted into the track.
4. Push fixture straight into track, rotate contact head adapter clockwise until it locks into place. (Fig 3)
5. The polarity lines on both track and fixture are aligned.
6. To aim, rotate fixture horizontally from mounting adapter and vertically from head.



Removal Instructions

1. To remove track head, pull mounting adapter sleeve down and turn counter clockwise 90°.

Changing Beam Angle Instructions

1. Twist open the front ring. (Fig. 4)
2. Push out the optic from the ring. (Fig. 5)
3. Replace the optic to the preferred beam angle.
4. Place the ring back and twist the ring to lock. (Fig. 6)

