

NTE-855

Jason Round LED Track Head

Source: 18W to 38W LED
1400lm to 2800lm

Type _____

Project _____

Catalog No. _____

Notes _____

PRODUCT DESCRIPTION

Small scale, LED Cylinder Track Fixture delivering up to 2800 lumens. Constructed of extruded and machined aluminum, the heat-sink and integrated driver housing provide a sleek and modern look, designed to quietly compliment any space. Dimming is standard and allows smooth illumination down to 10% precision adjustment. 315° aiming horizontal rotation, 90° vertical rotation. Integral on/off switch and track polarity indicator are standard.

FEATURES

- 1400lm, 2200lm or 2800lm LED packages
- 3000K, 3500K or 4000K @ 80 or 90 CRI
- Available in spot, narrow flood or flood beam spread
- Integral dimmable driver
- Die-cast aluminum construction with deep set COB optics
- Lens holder accommodates one accessory
- Clear glass lens included
- DLC Listed

CONSTRUCTION

Housing: Die-cast aluminum construction dissipates heat for longer life.

Optics: Molded TIR Optic engineered to provide a smooth uniform beam, maximizing output and minimizing glare. Available in spot, medium or flood beam spreads.

Adjustability: 315° horizontal and 90° vertical adjustment

ELECTRICAL

Input Voltage: 120V

Lumens / Wattage: 18 = 1400lm / 18W; 26 = 2200lm / 26W; 33 = 2800lm / 38W

Binning: 2-Step MacAdam (2 SDCM)

Color Temperature: 3000K, 3500K or 4000K

CRI: 80 or 90

Beam Spread: 24° Spot, 40° narrow flood or 60° flood

Dimming: Triac or ELV

[Click Here](#) or check complete dimmer list at www.NoraLighting.com in the "Compatibility" page under "Resources" tab

One / Two Circuit Conversion: Positive contact (opposite neutral and ground contacts) is preset to "down" position at factory, but may be raised to the higher position to install onto the second circuit of Nora Lighting NT-2300 series two-circuit track.

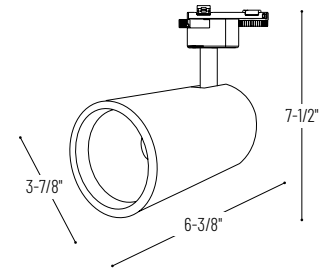
Accessories: Luminaire will accommodate (1) glass or louver and (1) barn door or snoot, no accessory holder is required.

LABELS AND LISTINGS

- cULus Listed for dry locations
- DLC Listed
- [5-Year Limited Warranty](#)



PRODUCT IMAGES AND DIMENSIONS



Jason Round LED Track Head

Series	Lumens / Wattage	Beam Spread	Color Temperature / CRI	Finish
NTE-855	18 = 1400lm / 18W	S = 24° Spot	30 = 3000K / 80 CRI	B = Black
		M = 40° Narrow Flood	35 = 3500K / 80 CRI	S = Silver (special order only)
	26 = 2200lm / 26W	F = 60° Flood	40 = 4000K / 80 CRI	W = White
			930 = 3000K / 90 CRI	
		33 = 2800lm / 38W	935 = 3500K / 90 CRI	
			940 = 4000K / 90 CRI	

Optional Accessories

Description
NTE-855BDB = Barndoor, Black
NTE-855BDW = Barndoor, White
NTE-855SN = Snoot, Black
NTE-855NWW = Directional Shield, Black
NTE-855HC = Honeycomb Louver
NTE-855CG = Clear Glass
NTE-855FG = Frosted Glass
NTE-855REFL24 = 24° Spot Optic
NTE-855REFL40 = 40° Narrow Flood Optic
NTE-855REFL60 = 60° Flood Optic

Example: **NTE-85526M930W** = Jason Round LED Track Head, 2200lm / 26W, 40° Narrow Flood, 3000K / 90 CRI, White Finish

NTE-855

Jason Round LED Track Head Accessories

Type _____
Project _____
Catalog No. _____
Notes _____



Honeycomb Louver

NTE-855HC

Adds a honeycomb louver accessory to Jason track head.



Frosted Glass

NTE-855FG

Replaces the clear glass included with Jason track head.



Barndoor

NTE-855BDB
NTE-855BDW

Adds an adjustable barn door accessory to Jason track head.

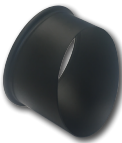
Black
White



Black Snoot

NTE-855SN

Adds a black snoot which reduces glare and spill light.



Black Directional Shield

NTE-855SNWW

Directional shield provides 45° cutoff.



Field Replaceable Optics

NTE-855REFL24 24° Spot
NTE-855REFL40 40° Narrow Flood
NTE-855REFL60 60° Flood
Luminaire's optics can be changed in the field

PHOTOMETRICS

Jason Round LED Track Head

Type

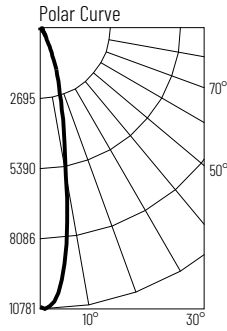
Project

Catalog No.

Notes

Test Information

Test Number: NTT11009
 Part Number: NTE-85533S30
 Beam Spread: Spot
 Lumens: 2941lm
 Wattage: 35.6W
 Efficacy: 83lpw
 CCT / CRI: 3000K / 80 CRI
 Spacing Criteria (0°-180°): 0.44
 Spacing Criteria (90°-270°): 0.42



Illuminance at a Distance

Distance from Luminaire	FC at Nadir	Beam Diameter
4'	669fc	1'-10"
6'	297fc	2'-8"
8'	167fc	3'-6"
10'	107fc	4'-5"
12'	74.4fc	5'-4"

Zonal Lumen Summary

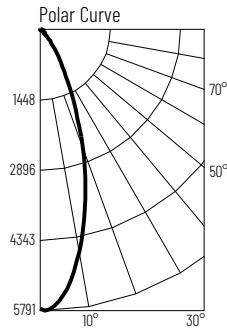
Zone	Lumens	% Luminaire
0-30	2533	86.1
0-40	2830	96.2
0-60	2895	98.4
0-90	2901	98.7
90-180	40	1.3
0-180	2941	100

Candela Table

Vertical Angles	Candela
0	10709
5	9673
15	3833
25	1340
35	445
45	59

Test Information

Test Number: NTT11011
 Part Number: NTE-85533M30
 Beam Spread: Narrow Flood
 Lumens: 2819lm
 Wattage: 35.5W
 Efficacy: 80lpw
 CCT / CRI: 3000K / 80 CRI
 Spacing Criteria (0°-180°): 0.66
 Spacing Criteria (90°-270°): 0.64



Illuminance at a Distance

Distance from Luminaire	FC at Nadir	Beam Diameter
4'	361fc	2'-10"
6'	160fc	4'-4"
8'	90.2fc	5'-8"
10'	57.7fc	7'-1"
12'	40.1fc	8'-6"

Zonal Lumen Summary

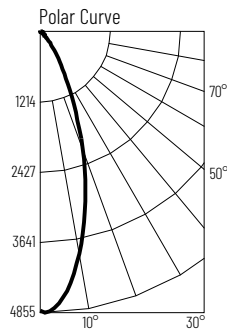
Zone	Lumens	% Luminaire
0-30	2408	85.4
0-40	2714	96.3
0-60	2775	98.4
0-90	2783	98.7
90-180	36	1.3
0-180	2819	100

Candela Table

Vertical Angles	Candela
0	5774
5	5643
15	4101
25	1646
35	456
45	54

Test Information

Test Number: NTT11008
 Part Number: NTE-85533F30
 Beam Spread: Flood
 Lumens: 2927lm
 Wattage: 36.5W
 Efficacy: 80lpw
 CCT / CRI: 3000K / 80 CRI
 Spacing Criteria (0°-180°): 0.78
 Spacing Criteria (90°-270°): 0.78



Illuminance at a Distance

Distance from Luminaire	FC at Nadir	Beam Diameter
4'	299fc	3'-10"
6'	133fc	5'-7"
8'	74.8fc	7'-6"
10'	47.9fc	9'-5"
12'	33.2fc	11'-4"

Zonal Lumen Summary

Zone	Lumens	% Luminaire
0-30	2518	86
0-40	2875	98.2
0-60	2908	99.3
0-90	2912	99.5
90-180	15	0.5
0-180	2927	100

Candela Table

Vertical Angles	Candela
0	4785
5	4721
15	3782
25	2442
35	291
45	23