

P8720 SERIES TRACK

Single-circuit track mounted **PROGRESS LED**

Description:

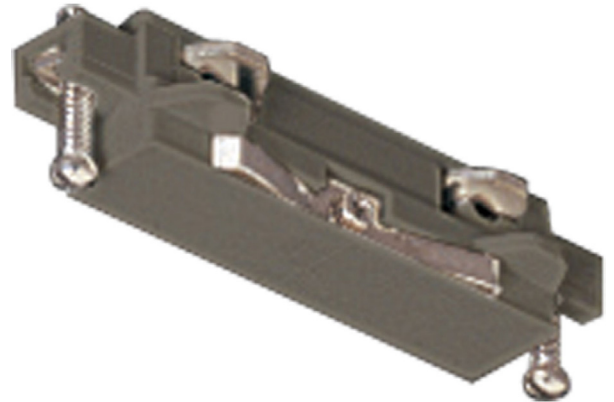
Straight connector for joining two or more track sections. The connectors plug into track sections only one way to ensure positive polarization.

Specifications:

- Brushed Nickel finish.
- 120 V
- 1 year warranty
-

P8720-09

Images:



Dimensions:

Width: 3"
Height: 1-1/4"